

Weekly Activities Report for: Aug 30, 2021

Chi-Alpha & Chi-Select (PTS)

	Daily Avg Value Traded (JPY)	Market Share	Daily Avg Symbol Traded	Avg PI (bps)	Top 5 Symbols Traded	Security Name	Value Traded (JPY)	Mkt Share
All	88,993,918,021	2.3%	2965	4.1	6920	LASRTEC	19,272,685,000	2.5%
TOPIX100	20,004,232,430	1.4%	99	0.5	9101	NYKLINE	15,760,242,900	3.2%
M400	40,642,222,565	3.2%	398	2.9	9104	MTI-OSK	13,532,531,700	3.5%
Small	14,676,076,595	3.3%	1442	4.6	9984	SOFTBNKG	6,137,170,370	1.3%
Others	13,671,386,431	2.1%	1025	8.8	1570	NFNKLV	5,924,531,902	0.8%

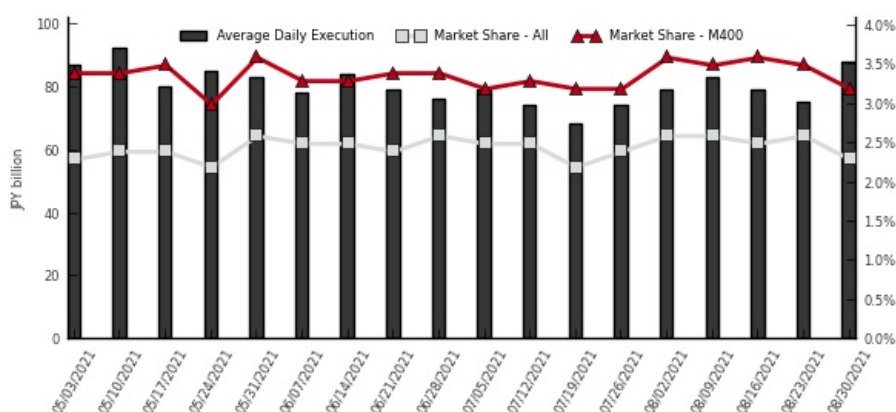
Chi-Match (VWAP Cross PTS)

	Daily Avg Value (JPY)		Daily Avg Symbol	
	Traded	Ordered	Traded	Ordered
All	237,579,013	9,571,796,589	8	305
TOPIX100	188,020,424	4,255,963,697	3	53
M400	54,639,711	3,372,327,068	3	113
Small	62,069,599	1,220,569,837	3	98
Others	43,556,736	722,935,986	3	40

Kai-X (ToSTNeT)

	Daily Avg Value Traded (JPY)	Daily Avg Symbol Traded	Avg PI (bps)
All	6,399,018,940	407	5.7
TOPIX100	650,086,148	43	1.8
M400	4,640,997,220	214	5.7
Small	889,942,440	105	7.6
Others	217,993,132	44	5.4

Weekly Trend (Chi-Alpha & Chi-Select)



(1) Market share is calculated as Chi-X's 2 lit venues / (TSE Auction + Chi-X's 2 lit venues + SBI JNX's 2 lit venues)

(2) PI (Price Improvement) compares the execution price vs. TSE's best bid for sell or best offer for buy at the point of execution and is calculated from the perspective of the Taker of the trade

(3) Chi-Match's and Kai-X's trade value is double-counted in order to be comparable with order value

Chi-X Japan Client Service

Chi-X Japan | Tokyo | Tel: +81 (3) 6366 8899 | jp.client.service@chi-x.com

www.chi-x.co.jp