

## Weekly Activities Report for: Aug 16, 2021

### Chi-Alpha & Chi-Select (PTS)

	Daily Avg Value Traded (JPY)	Market Share	Daily Avg Symbol Traded	Avg PI (bps)	Top 5 Symbols Traded	Security Name	Value Traded (JPY)	Mkt Share
<b>All</b>	79,502,250,776	2.5%	2901	3.8	9101	NYKLINE	23,719,993,000	4.1%
<b>TOPIX100</b>	17,255,412,338	1.5%	99	0.5	6920	LASRTEC	22,694,273,000	6.5%
<b>M400</b>	36,580,189,380	3.6%	397	3.0	9984	SOFTBNKG	9,045,661,450	2.6%
<b>Small</b>	14,150,423,428	3.3%	1423	4.5	9104	MTI-OSK	7,804,283,300	3.7%
<b>Others</b>	11,516,225,630	2.0%	981	7.2	1570	NFNKLV	7,609,632,857	1.4%

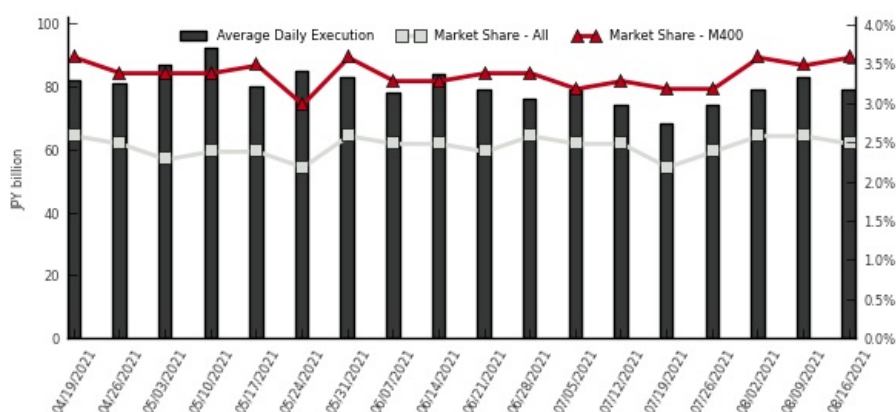
### Chi-Match (VWAP Cross PTS)

	Daily Avg Value (JPY)		Daily Avg Symbol	
	Traded	Ordered	Traded	Ordered
<b>All</b>	342,975,018	12,003,993,724	4	201
<b>TOPIX100</b>	377,560,422	6,333,674,245	3	36
<b>M400</b>	55,878,420	4,134,084,027	1	60
<b>Small</b>	35,791,772	853,622,354	1	85
<b>Others</b>	0	682,613,096	0	19

### Kai-X (ToSTNeT)

	Daily Avg Value Traded (JPY)	Daily Avg Symbol Traded	Avg PI (bps)
<b>All</b>	4,498,090,872	432	6.1
<b>TOPIX100</b>	413,062,918	30	2.1
<b>M400</b>	3,224,628,260	205	5.6
<b>Small</b>	470,491,000	142	8.9
<b>Others</b>	389,908,694	54	6.7

### Weekly Trend (Chi-Alpha & Chi-Select)



(1) Market share is calculated as Chi-X's 2 lit venues / (TSE Auction + Chi-X's 2 lit venues + SBI JNX's 2 lit venues)

(2) PI (Price Improvement) compares the execution price vs. TSE's best bid for sell or best offer for buy at the point of execution and is calculated from the perspective of the Taker of the trade

(3) Chi-Match's and Kai-X's trade value is double-counted in order to be comparable with order value

### Chi-X Japan Client Service

Chi-X Japan | Tokyo | Tel: +81 (3) 6366 8899 | [jp.client.service@chi-x.com](mailto:jp.client.service@chi-x.com)

[www.chi-x.co.jp](http://www.chi-x.co.jp)