

## Chi-Alpha & Chi-Select (PTS)

	Daily Avg Value Traded (JPY)	Market Share	Daily Avg Symbol Traded	Avg PI (bps)	Top 5 Symbols Traded	Security Name	Value Traded (JPY)	Mkt Share
All	83,516,250,255	2.3%	3122	5.1	1570	NFNKLV	11,839,234,616	1.6%
TOPIX100	19,551,961,416	1.2%	99	0.5	9984	SOFTBNKG	10,145,555,320	1.4%
M400	33,977,068,074	3.4%	396	2.2	6920	LASRTEC	8,228,717,200	4.4%
Small	16,702,616,930	3.7%	1563	3.9	8035	TKOELCN	5,855,464,450	1.8%
Others	13,284,603,835	2.1%	1063	16.8	8306	MUFG	5,044,344,450	1.6%

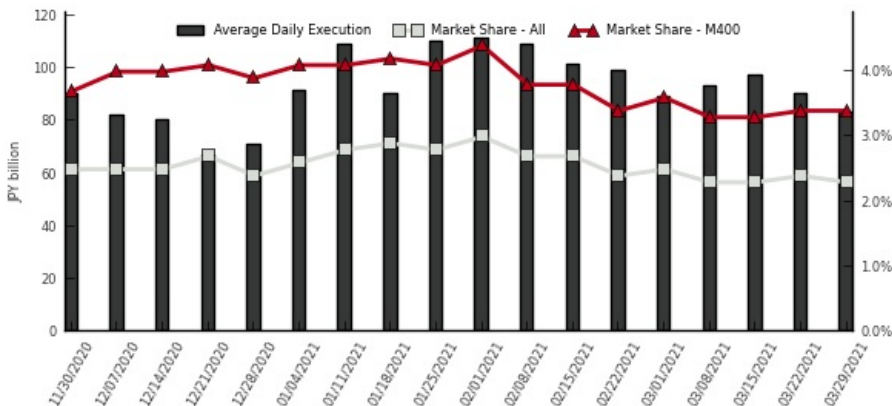
## Chi-Match (VWAP Cross PTS)

	Daily Avg Value (JPY)		Daily Avg Symbol	
	Traded	Ordered	Traded	Ordered
All	251,769,674	12,990,478,381	20	451
TOPIX100	160,676,432	4,287,774,639	11	58
M400	171,802,924	5,672,374,922	13	130
Small	46,737,392	1,599,094,112	5	211
Others	20,615,688	1,431,234,707	2	51

## Kai-X (ToSTNeT)

	Daily Avg Value Traded (JPY)	Daily Avg Symbol Traded	Avg PI (bps)
All	7,508,951,992	439	6.4
TOPIX100	1,089,546,550	54	1.9
M400	5,169,068,880	195	6.1
Small	661,959,320	129	10.8
Others	588,377,242	60	5.5

## Weekly Trend (Chi-Alpha & Chi-Select)



(1) Market share is calculated as Chi-X's 2 lit venues / (TSE Auction + Chi-X's 2 lit venues + SBI JNX's 2 lit venues)

(2) PI (Price Improvement) compares the execution price vs. TSE's best bid for sell or best offer for buy at the point of execution and is calculated from the perspective of the Taker of the trade

(3) Chi-Match's and Kai-X's trade value is double-counted in order to be comparable with order value

## Chi-X Japan Client Service

Chi-X Japan | Tokyo | Tel: +81 (3) 6366 8899 | [jp.client.service@chi-x.com](mailto:jp.client.service@chi-x.com)

[www.chi-x.co.jp](http://www.chi-x.co.jp)