

## Chi-Alpha & Chi-Select (PTS)

	Daily Avg Value Traded (JPY)	Market Share	Daily Avg Symbol Traded	Avg PI (bps)	Top 5 Symbols Traded	Security Name	Value Traded (JPY)	Mkt Share
<b>All</b>	91,041,160,638	2.6%	3149	3.2	1570	NFNKLV	16,425,631,414	1.6%
<b>TOPIX100</b>	19,021,051,848	1.3%	99	0.6	9984	SOFTBNKG	9,392,623,310	1.4%
<b>M400</b>	34,872,589,294	4.1%	398	3.0	6920	LASRTEC	7,368,893,500	4.3%
<b>Small</b>	17,215,790,314	4.1%	1513	3.5	1357	NFNKDOUB	6,842,739,231	3.0%
<b>Others</b>	19,931,729,182	2.5%	1139	4.4	2413	M3	6,720,969,170	2.9%

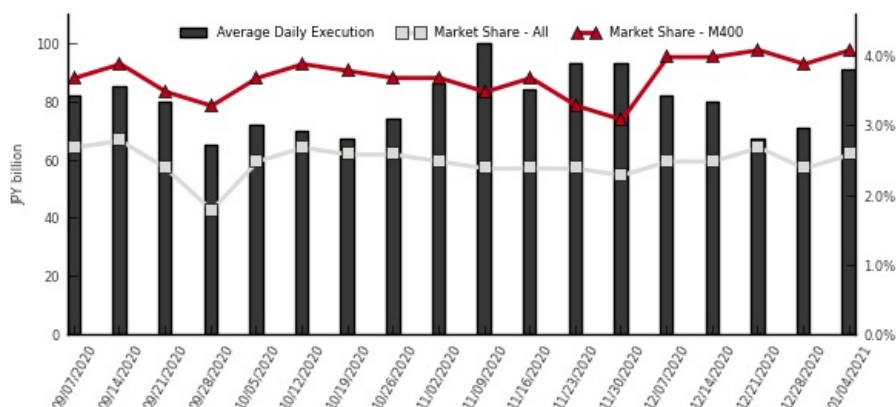
## Chi-Match (VWAP Cross PTS)

	Daily Avg Value (JPY)		Daily Avg Symbol	
	Traded	Ordered	Traded	Ordered
<b>All</b>	1,747,488,310	14,982,249,817	99	913
<b>TOPIX100</b>	1,059,925,414	3,809,786,023	40	96
<b>M400</b>	523,033,400	6,062,040,275	43	282
<b>Small</b>	58,566,872	1,902,838,665	5	438
<b>Others</b>	176,604,372	3,207,584,852	17	96

## Kai-X (ToSTNet)

	Daily Avg Value Traded (JPY)	Daily Avg Symbol Traded	Avg PI (bps)
<b>All</b>	4,639,443,208	329	6.6
<b>TOPIX100</b>	399,720,610	34	1.9
<b>M400</b>	3,280,990,420	166	6.3
<b>Small</b>	396,245,060	69	11.3
<b>Others</b>	562,487,118	59	5.9

## Weekly Trend (Chi-Alpha & Chi-Select)



(1) Market share is calculated as Chi-X's 2 lit venues / (TSE Auction + Chi-X's 2 lit venues + SBI JNX's 2 lit venues)

(2) PI (Price Improvement) compares the execution price vs. TSE's best bid for sell or best offer for buy at the point of execution and is calculated from the perspective of the Taker of the trade

(3) Chi-Match's and Kai-X's trade value is double-counted in order to be comparable with order value

## Chi-X Japan Client Service

Chi-X Japan | Tokyo | Tel: +81 (3) 6366 8899 | [jp.client.service@chi-x.com](mailto:jp.client.service@chi-x.com)

[www.chi-x.co.jp](http://www.chi-x.co.jp)